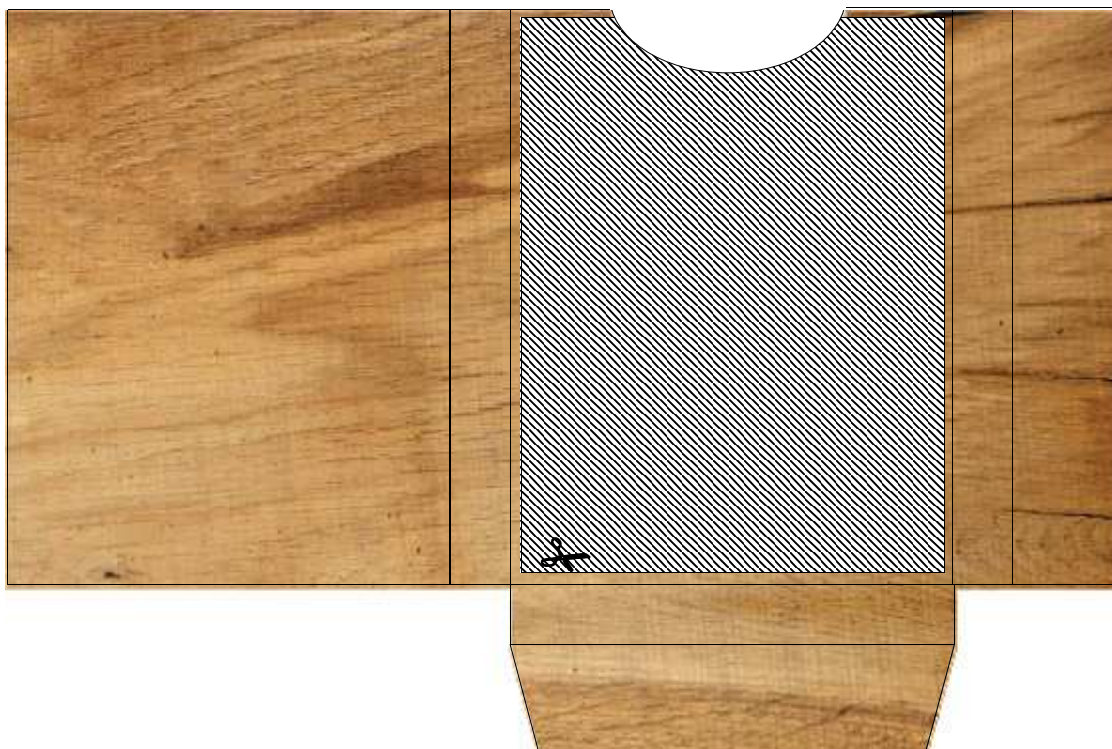




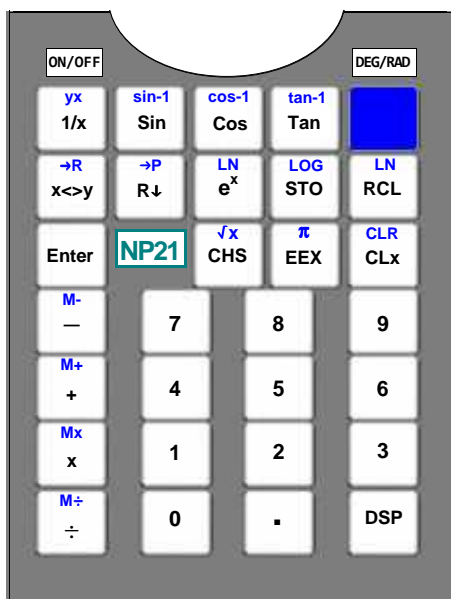
Wood Keyboard Box

- ① Print the box template sheet on 80g paper,
 - ② Cut out only the gray hatched area,
 - ③ Laminate the entire sheet,
 - ④ Finally, cut out the box and assemble it.
- Finally, cut out each card without laminating them.

- ① Imprimer la feuille contenant le modèle de boîte sur papier 80g,
 - ② découper uniquement la partie hachurée grise,
 - ③ Plastifier la feuille entière,
 - ④ Découper enfin la boîte, et l'assembler.
- Pour finir découper chaque carte sans les plastifier.



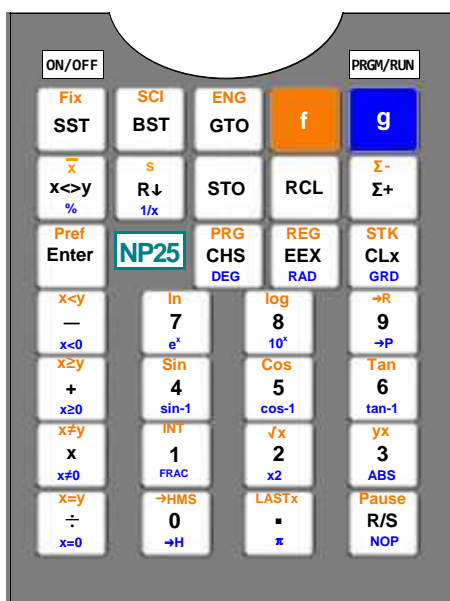
HP-21



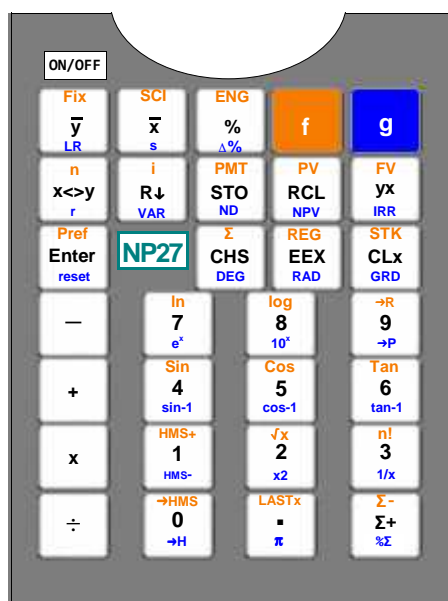
HP-22



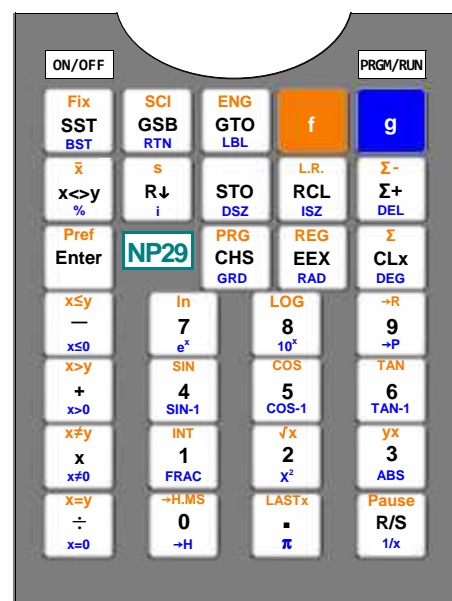
HP-25



HP-27C



HP-29



HP-31E

ON/OFF	FIX \sqrt{x}	SCI $1/x$	π y^x	10^x e^x	LOG LN
DEG $x \leftrightarrow y$	RAD $R \downarrow$	GRD STO	LSTx RCL	f	
Prefix Enter	NP31	ALL CHS	REG EEX	STK CLx	
$\rightarrow R$ $-$	Sin 7	Cos 8	Tan 9		
$\rightarrow P$ $+$	Sin-1 4	Cos-1 5	Tan-1 6		
$\rightarrow DEG$ x	$\rightarrow in$ 1	$\rightarrow F$ 2	$\rightarrow lbm$ 3		
$\rightarrow RAD$ \div	$\rightarrow mm$ 0	$\rightarrow C$ \cdot	$\rightarrow kg$ %		

HP-32E

ON/OFF	Fix \sqrt{x}	SCI $1/x$	ENG y^x	f	g
$x \leftrightarrow y$	$R \downarrow$	L.R. STO	\bar{x} RCL	Σ^- Σ^+	Σ^+ $n!$
Prefix Enter	NP32	ALL CHS	REG EEX	Σ CLx	DEG
$\rightarrow in$ $-$	Sin 7	Cos 8	Tan 9		
$\rightarrow F$ $+$	$\rightarrow R$ 4	$\rightarrow RAD$ 5	$\rightarrow H.MS$ 6		
$\rightarrow lbm$ x	Sinh 1	Cosh 2	Tanh 3		
$\rightarrow gal$ \div	LN 0	LOG \cdot	$\% \Sigma$ %		$\Delta \%$

HP-33C

ON/OFF	Fix SST	SCI GSB	ENG GTO	f	g
$x \leftrightarrow y$	$R \downarrow$	r STO	L.R. RCL	Σ^- Σ^+	Σ^+ s
Prefix Enter	NP33	PRG CHS	REG EEX	STK CLx	ABS
$x \leq y$ $-$	SIN 7	COS 8	TAN 9		
$x > y$ $+$	$\rightarrow R$ 4	$\rightarrow RAD$ 5	$\rightarrow H.MS$ 6		
$x \neq y$ x	LN 1	LOG 2	y^x 3		
$x = y$ \div	\sqrt{x} 0	LASTx \cdot	Pause R/S		%

HP-34C

ON/OFF	Fix DEG	SCI RAD	ENG GRD	f	g
$x \leftrightarrow y$	$R \uparrow R \downarrow$	I DSE STO	(I) ISG RCL	h	
Prefix Enter	NP34	PRG CHS	REG EEX	Σ CLx	Σ ABS
$x \leq y$ $-$	Sin sin-1 7	Cos cos-1 8	Tan tan-1 9		
$x > y$ $+$	$\rightarrow R$ $\rightarrow P$ 4	$\rightarrow Deg$ $\rightarrow Rad$ 5	$\rightarrow H.MS$ $\rightarrow H$ 6		
$x \neq y$ $x \neq 0$ x	LN e^x 1	LOG 10^x 2	\sqrt{x} x^2 3		
$x = y$ \div	f_y 0	SOLVE \cdot	Σ^+ Σ^- R/S		PSE

HP-37E

ON/OFF	12x n	12 \div i	1/X PV	\sqrt{x} PMT	y^x FV
e^x STO	LN RCL	$\Delta \%$ %	Price %T	f	
Amort Enter	NP37	FIN CHS	$R \downarrow$ $x \leftrightarrow y$	ALL CLx	
\bar{x} $-$	7	8	9		
s $+$	4	5	6		
\bar{y}, r x	1	2	3		
$n!$ \div	0	\cdot	Σ^- Σ^+		

HP-38C

ON/OFF	Amort n	12 \div i	NPV PV	RND PMT	IRR FV
\sqrt{x} STO	$\%T$ RCL	$\Delta \%$ %	LN f	g	
Prefix Enter	NP38	FIN CHS	Σ $X \leftrightarrow Y$	ALL CLx	CLP
$\Delta DAYS$ $-$	7 GTO	8 BST	9 SST		
DATE $+$	4 PSE	5 $x \leq 0$	6 $x = 0$		
Intgr x	1 \bar{x}, r	2 \bar{y}, r	3 $n!$		
$1/x$ \div	0 \bar{x}	\cdot s	Σ^+ Σ^- R/S		Σ^-